

Customer :

customer

Customer part :

customer part

Comment :

Comment

S1(mg/g)=1.95

S2(mg/g)=6.39

Tmax(°C)=442

TpkS2(°C)=481.0

PI=0.23

HI=279

Sample =8443

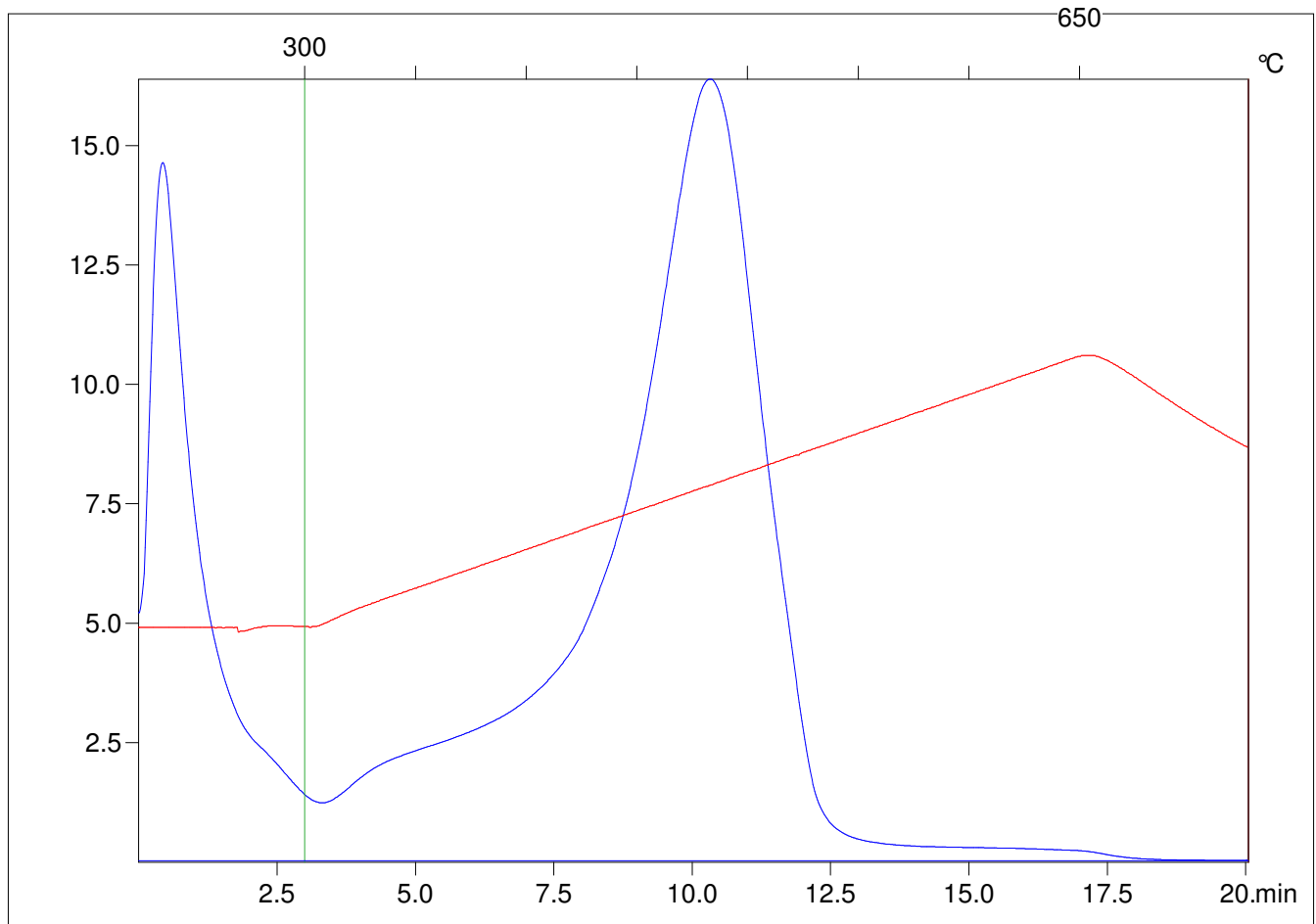
Method =Bulk Rock

Cycle=Basic

KFID(10*9)=1337

Qty(mg)=70.2

TOC(%)=2.29



C:\VINCI\AGS_101\AGS029.R00 : FID pyrolysis graphic

State

Pyro Status

Oxi Status