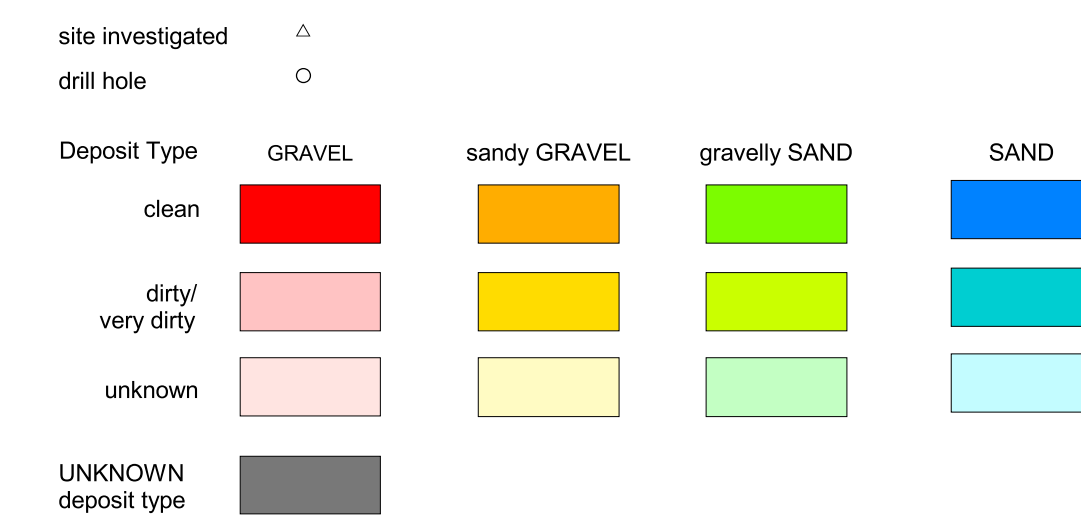


FEATURES LEGEND

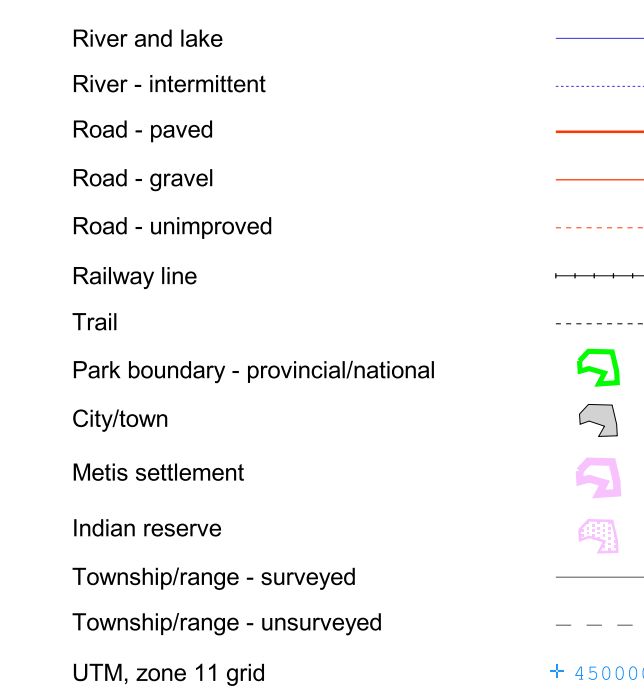


Deposit Type Definitions:

GRAVEL deposit: contains greater than 75% gravel.
 sandy GRAVEL deposit: contains 50% to 75% gravel.
 gravelly SAND deposit: contains 25% to 50% gravel.
 SAND deposit: contains less than 25% gravel.
 UNKNOWN deposit: amount of gravel unknown.

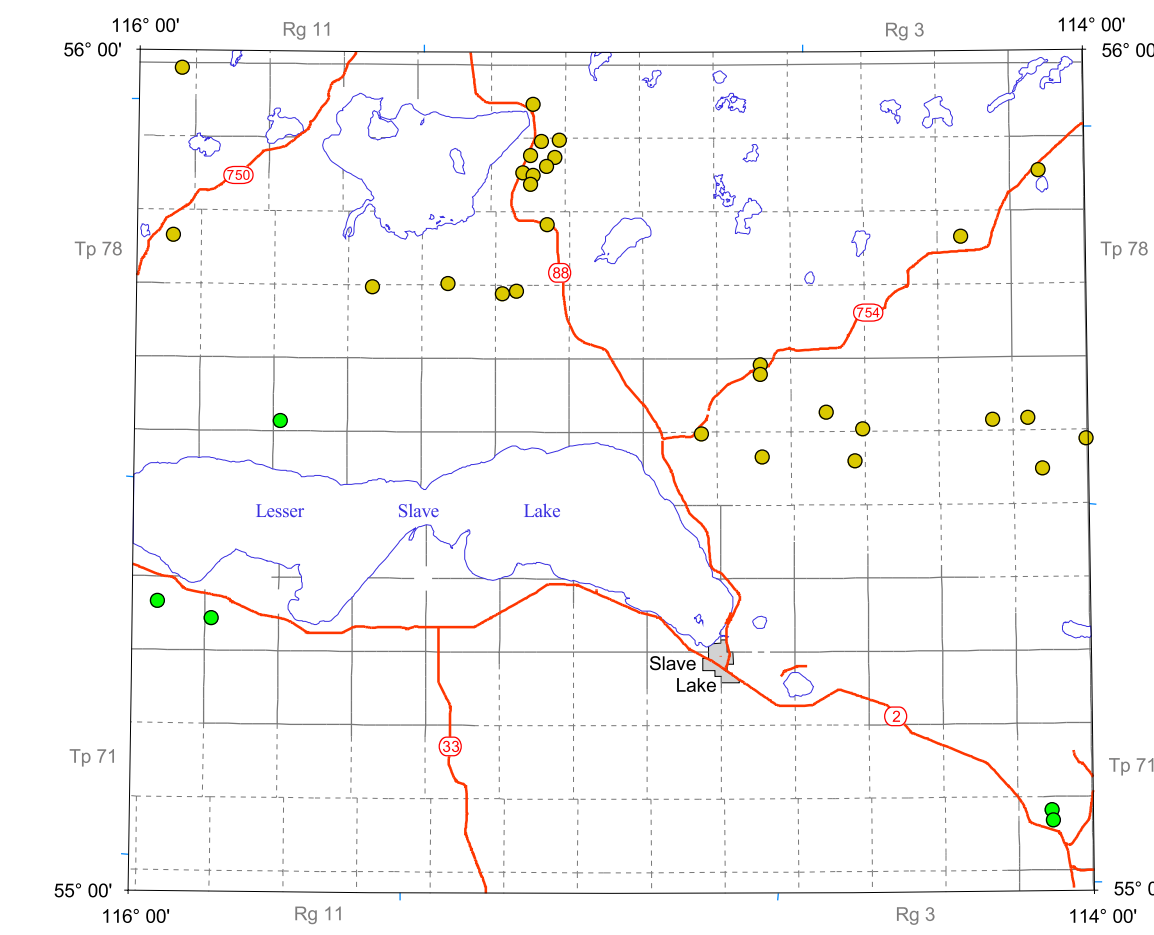
clean deposit: contains less than 3% silt and clay.
 dirty deposit: contains 3% to 10% silt and clay.
 very dirty deposit: contains greater than 10% silt and clay.
 unknown: contains unknown percentage of mixed silt and clay.

BASEMAP LEGEND



This is a common map legend. Not all units may be present on this map.

Study Level



Study Level Definitions:

Level 1 Aggregate reserves confirmed by grid testing and sampling.
 Level 2 Aggregate reserves confirmed by multiple test holes and sampling.
 Level 3 Sand and/or gravel confirmed by Alberta Geological Survey site investigation and limited sampling and testing.
 Level 4 Sand and/or gravel areas assumed by Alberta Geological Survey investigation of associated sites, remote sensing and other sources of information.
 Level 5 Potential sand and/or gravel areas identified from remote sensing and other sources of information without Alberta Geological Survey site investigation.

References:

Edwards, W.A.D. and Scafe, D. (1996): Mapping and resource evaluation of the Tertiary and preglacial sand and gravel formations of Alberta, Alberta Energy and Utilities Board, EUB/AGS, OFR 1994-06, 241 p.

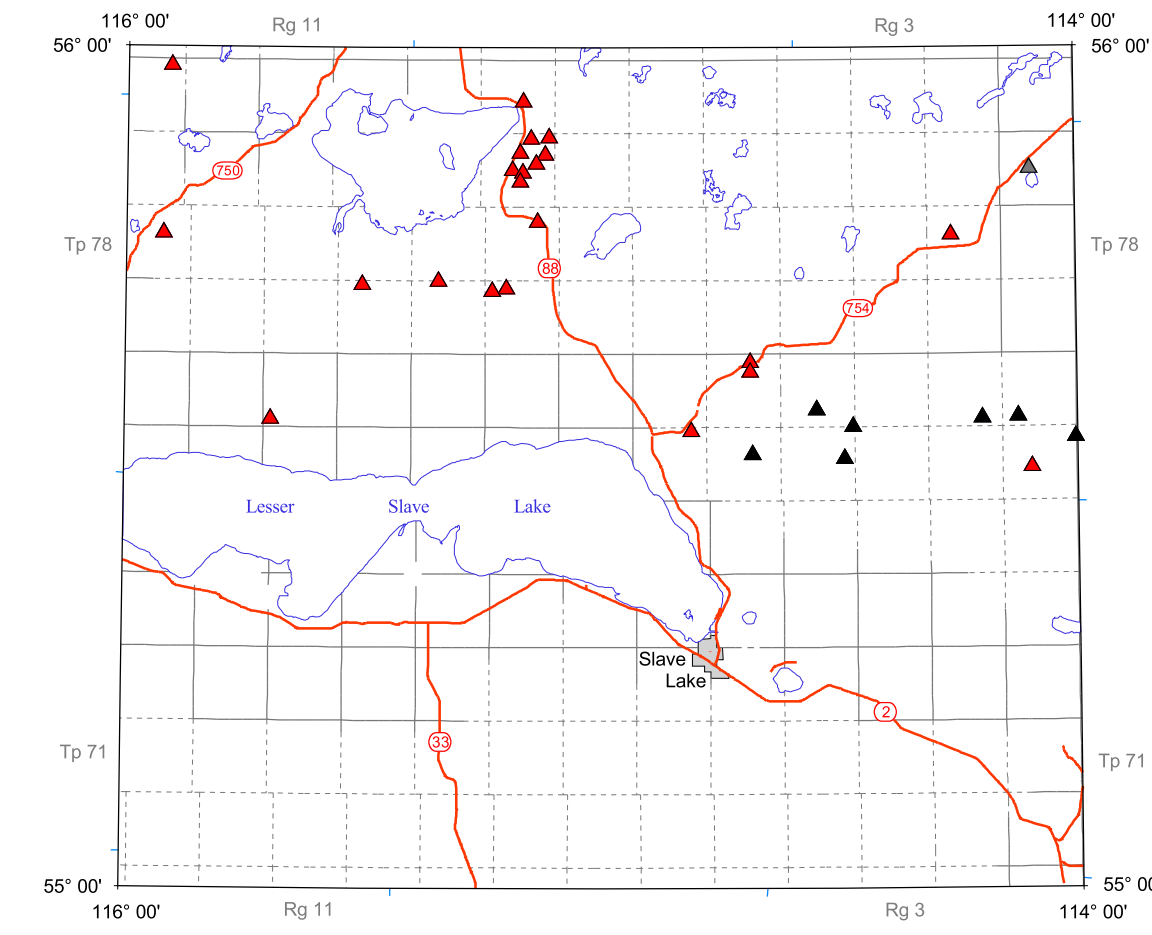
Edwards, W.A.D., Boisvert, D.R., Pawlowicz, J.G., Andriashek, L.D. and Fenton, M.M. (1991): Sand and gravel resources of the Athabasca area, Alberta (83P west and 83I northwest), Alberta Research Council, OFR 1991-22, 55 p.

Richardson, R.J.H. and Sham, P. (1985): Aggregate resources of the Peace River map area, NTS 84C, Alberta Research Council, Map A84C, scale 1:250 000.

Scafe, D.W. and Sham, P.C. (1988): Sand and gravel resources of the Pearets Lake (south half of 84B) and Lesser Slave Lake (north half of 83O) map areas, Alberta: Alberta Research Council, OFR 1988-05, 29 p.

Scafe, D.W., Sham, P.C. and Ray, C.M. (1987): Sand and gravel resources of the Pelican (west central portion of 83P) map area, Alberta: Alberta Research Council, OFR 1987-02, 53 p.

Genesis or Geological Feature

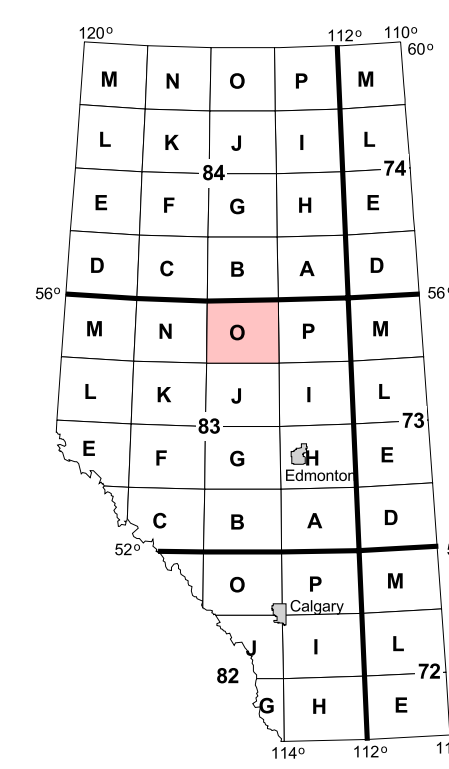
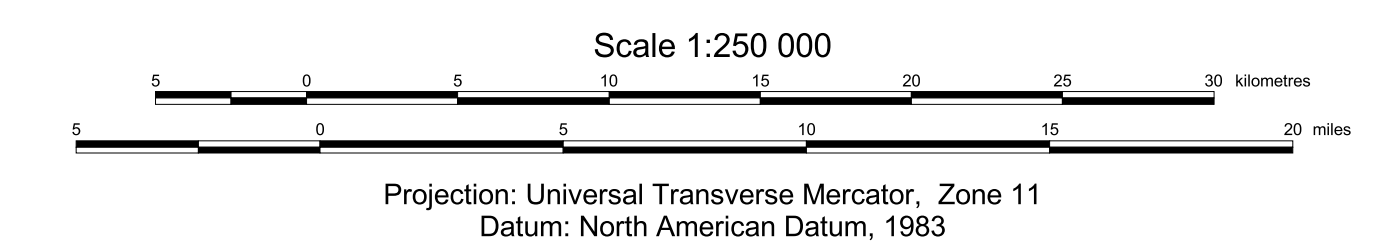


▲ Preglacial
 ▲ Glaciofluvial
 ▲ Alluvial
 ▲ Eolian
 ▲ Glacial
 ▲ Other
 ▲ Unknown

Published 2003
 Copies of this map may be obtained from:
 Information Sales
 Alberta Geological Survey
 Telephone: (780) 422-3767
 Web site: www.ags.gov.ab.ca

Map 282
Sand and Gravel Deposits with Aggregate Potential
Lesser Slave Lake, Alberta (NTS 830)

Geology compiled by: W.A.D. Edwards, H.D. Budney, T. Berezniuk and L. Butkovic



Acknowledgement:

GIS/Database/ Cartography by:
 M.C. Price, D.K. Chao, Z.A. Amer
 and N.L. Blundon

Digital base map provided by:
 Spatial Data Warehouse

Disclaimer:

The Alberta Geological Survey and its employees and contractors make no warranty, guarantee or representation, express or implied, or assume any legal liability regarding the correctness, accuracy, completeness, or reliability of this publication. When using information from this publication in other publications or presentations, due acknowledgement should be given to the Alberta Energy and Utilities Board/Alberta Geological Survey.