

FEATURES LEGEND

Site investigated	△			
Drillhole	○			
Deposit Type	GRAVEL	sandy GRAVEL	gravelly SAND	SAND
	clean	dirty/very dirty	unknown	UNKNOWN deposit type
	[Red Box]	[Orange Box]	[Green Box]	[Blue Box]
	[Pink Box]	[Yellow Box]	[Light Green Box]	[Light Blue Box]
	[Grey Box]	[Light Yellow Box]	[Light Green Box]	[Light Blue Box]
	[Dark Grey Box]			

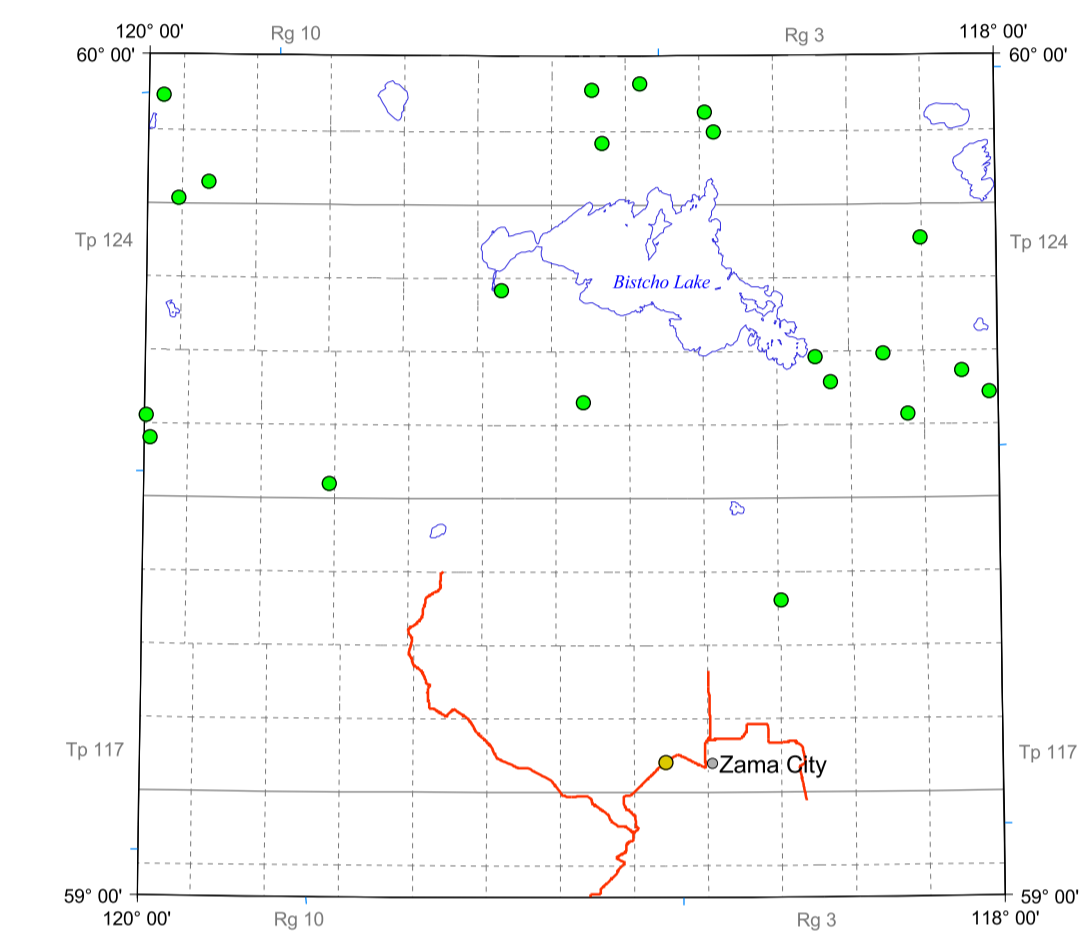
Deposit Type Definitions:
 GRAVEL deposit: contains greater than 75% gravel.
 sandy GRAVEL deposit: contains 50% to 75% gravel.
 gravelly SAND deposit: contains 25% to 50% gravel.
 SAND deposit: contains less than 25% gravel.
 UNKNOWN deposit: amount of gravel unknown.
 clean deposit: contains less than 3% silt and clay.
 dirty deposit: contains 3% to 10% silt and clay.
 very dirty deposit: contains greater than 10% silt and clay.
 unknown: contains unknown percentage of mixed silt and clay.

BASE MAP LEGEND

River and lake	[Blue Line]
River - intermittent	[Dashed Blue Line]
Road - paved	[Red Line]
Road - gravel	[Orange Line]
Road - unimproved	[Dotted Orange Line]
Railway line	[Black Line with Cross-ticks]
Trail	[Dashed Black Line]
Park boundary - provincial/national	[Green Line with Dots]
City/town	[Grey Polygon]
Metis settlement	[Purple Polygon]
Indian reserve	[Pink Polygon]
Township/range - surveyed	[Solid Dotted Line]
Township/range - unsurveyed	[Dashed Dotted Line]
UTM, Zone 11 Grid	[Blue Crosshair]

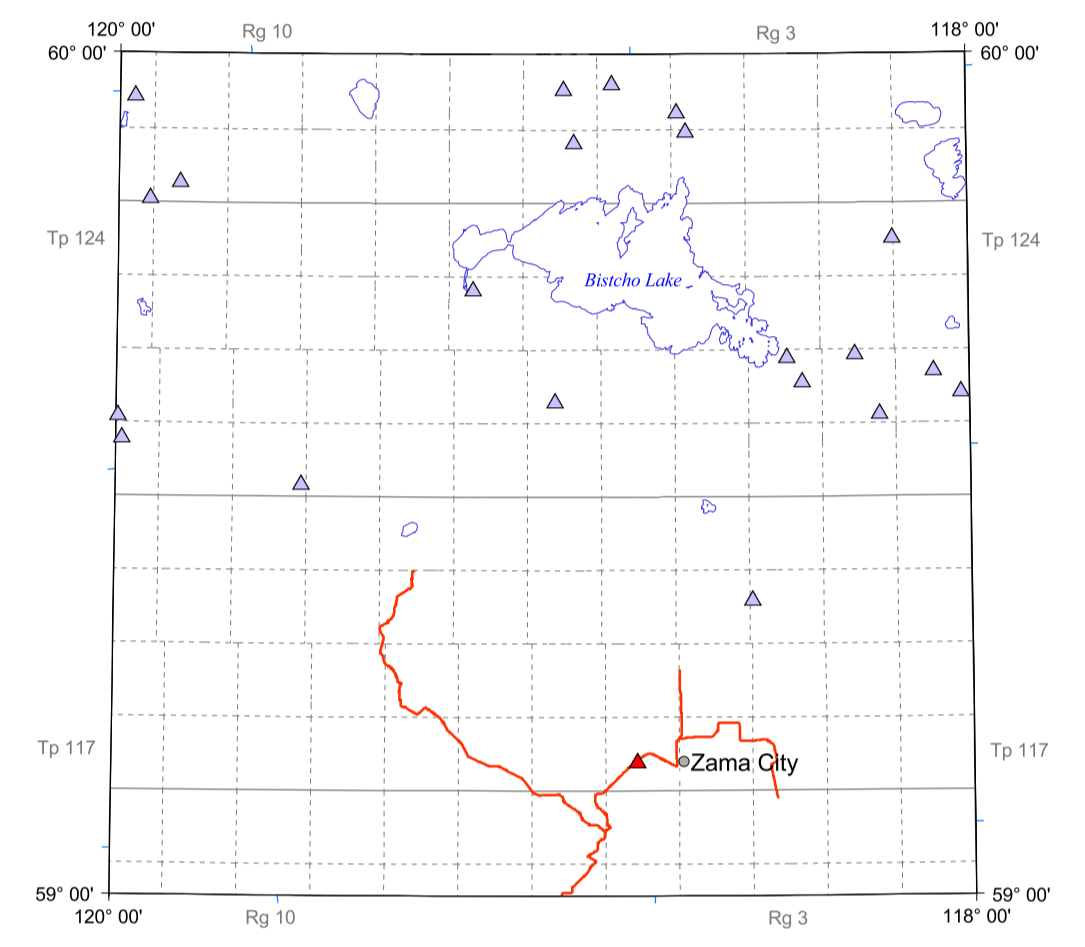
This is a common map legend. Not all units may be present on this map.

Study Level



● Level 1 ● Level 2 ● Level 3 ● Level 4 ● Level 5

Genesis or Geological Feature



▲ Preglacial ▲ Alluvial ▲ Glacial ▲ Unknown
 ▲ Glaciofluvial ▲ Eolian ▲ Other

Study Level Definitions:

Level 1 Aggregate reserves confirmed by grid testing and sampling.
 Level 2 Aggregate resources confirmed by multiple test holes and sampling.
 Level 3 Sand and/or gravel confirmed by Alberta Geological Survey site investigation and limited sampling and testing.
 Level 4 Sand and/or gravel areas assumed by Alberta Geological Survey investigation of associated sites, remote sensing and other sources of information.
 Level 5 Potential sand and/or gravel areas identified from remote sensing and other sources of information without Alberta Geological Survey site investigation.

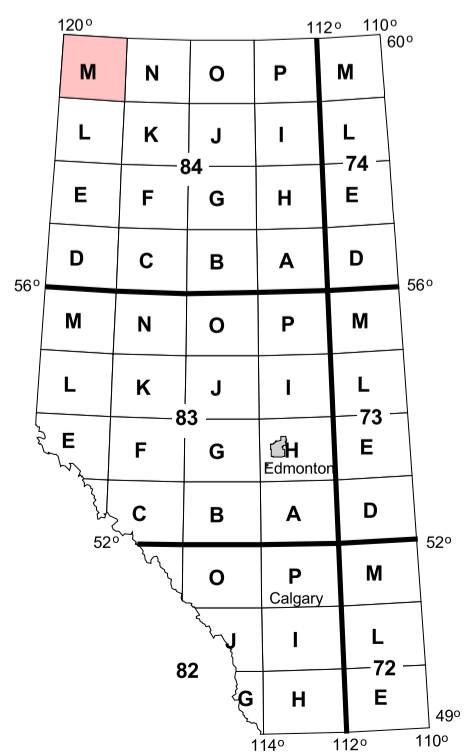
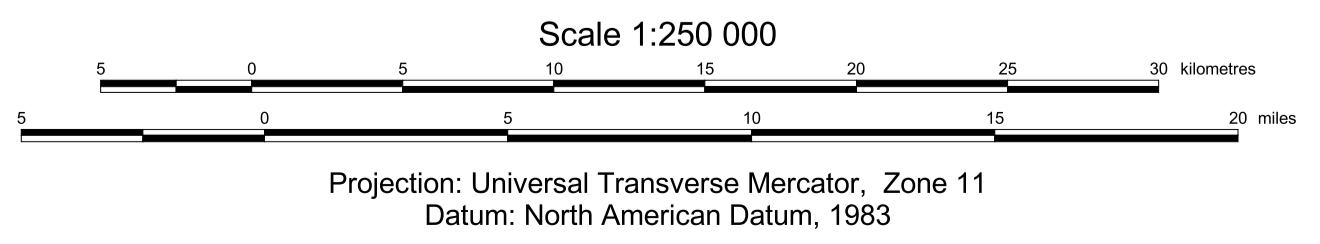
References:

Fox, J.C. (1986): Aggregate resources of the Bistcho Lake map area, NTS 84M05-16; Alberta Research Council, Map A84M05-16, scale 1:250 000.
 Fox, J.C., Richardson, R.J.H. and Sham, P.C. (1987): Aggregate resource potential by geological ranking and reserve estimates, Peace River-High Level Area, Alberta; Alberta Research Council, Map 210, scale 1:500 000.
 Fox, J.C., Richardson, R.J.H., Gowan, R. and Sham, P.C. (1987): Surficial geology of the Peace River-High Level Area, Alberta; Alberta Research Council, Map 205, scale 1:500 000.
 Richardson, R.J.H. (1985): Aggregate resources of the Bistcho Lake map area, NTS 84M01-04; Alberta Research Council, Map A84M01-04, scale 1:250 000.

Published 2004
 Copies of this map may be obtained from:
 Information Sales
 Alberta Geological Survey
 Telephone: (780) 422-3767
 Website: www.ags.gov.ab.ca

Map 310
Sand and Gravel Deposits with Aggregate Potential,
Bistcho Lake, Alberta (NTS 84M)

Geology compiled by: W.A.D. Edwards, H.D. Budney, T. Berezniuk and L. Butkovic



Acknowledgement:

GIS/Data Base/ Cartography by:
 M.C. Price, D.K. Chao, Z.A. Amer
 and N.L. Blundon

Digital base map provided by:
 Spatial Data Warehouse

Disclaimer:

The Alberta Geological Survey and its employees and contractors make no warranty, guarantee or representation, express or implied, or assume any legal liability regarding the correctness, accuracy, completeness, or reliability of this publication. When using information from this publication in other publications or presentations, due acknowledgement should be given to the Alberta Energy and Utilities Board/Alberta Geological Survey.