



LEGEND

PRECAMBRIAN*

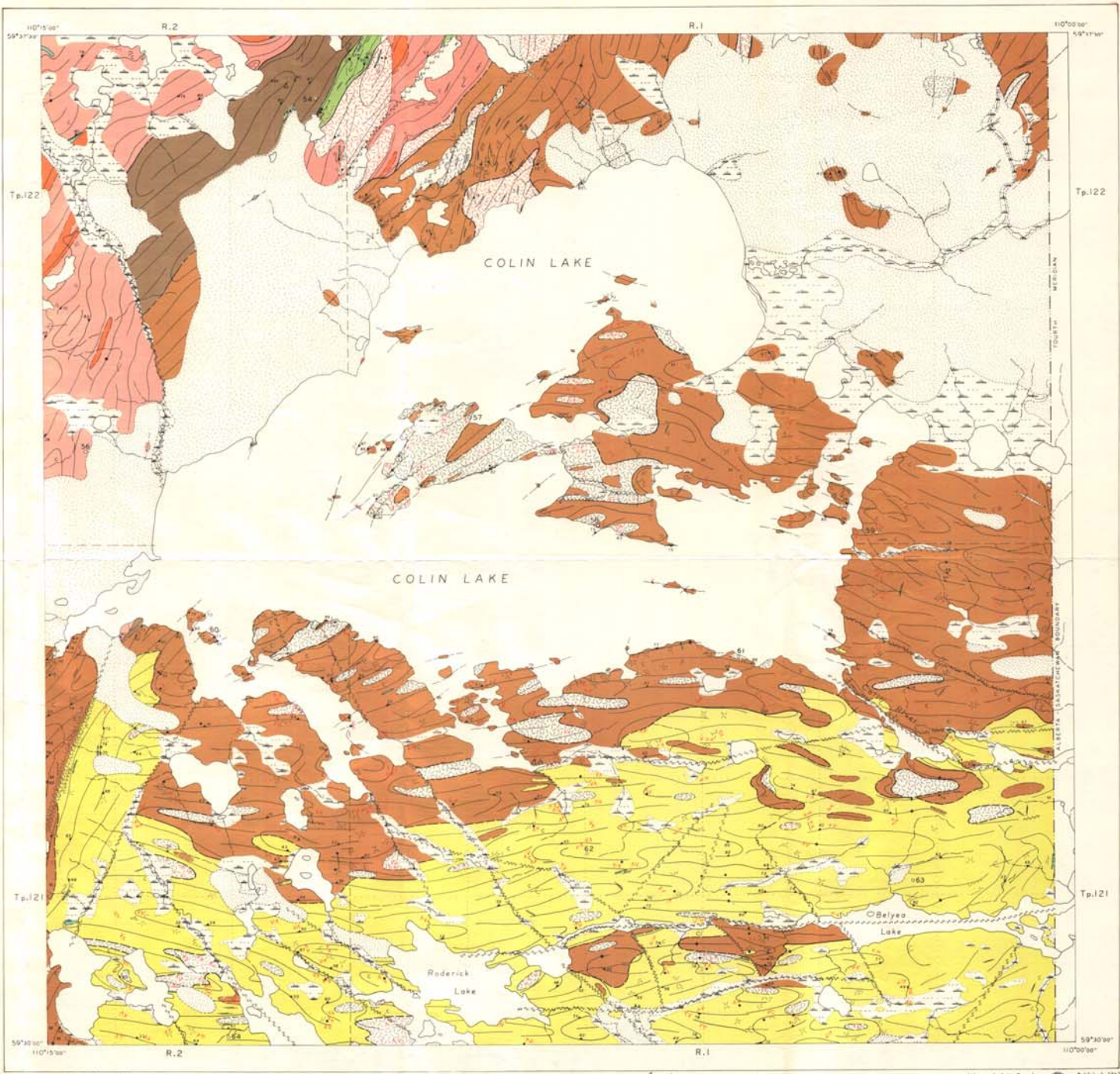
- Quartzite, pure and impure, white, grey, green, pink and blue; including biotite schists, white, minor silty quartz pebbles, feldspar masses, granite and pegmatite lenses, ferruginous and garnetiferous zones.
- Biotite schist, with abundant quartz, some sericite; including chlorite, phyllonite, quartzite, minor silty quartz pebbles, feldspar masses, granite and pegmatite lenses, ferruginous, and garnetiferous zones.
- Biotite granite C, with white to grey subhedral to anhedral feldspar megacrysts, one-quarter to one-half inch in size, in a foliated matrix, including minor epidote, microgranite and pegmatite.
- Biotite granite D, with grey to pink to red subhedral feldspar megacrysts, one and one-half to three inches in size, in a foliated to massive matrix, including minor epidote, microgranite and pegmatite.
- Biotite granite E, with pink to red subhedral feldspar megacrysts, one-quarter to one-half inch in size, slightly larger than the foliated to massive matrix, including minor epidote and microgranite.
- Quartz diorite, with white to pink feldspar megacrysts, one-quarter to three-quarters inch in size, in a foliated matrix containing hornblende, minor biotite, (locally biotite rich and hornblende poor), including minor epidote, microgranite.
- Biotite granite gneiss, with some hornblende, chlorite, including minor massive granite, porphyritic granite, granulite, sillite; lenses of biotite, quartzite, amphibolite, garnetiferous zones.
- Hornblende granite gneiss, with some biotite, chlorite, including minor massive granite, porphyritic granite, granulite and amphibolite.
- Amphibolite, including biotite amphibolite, hornblende; banded to massive.
- Biotite granite, with white to pink to red feldspar, minor sericite, including leucocratic phases; massive. Phases with abundant feldspar megacrysts (1), one-quarter to one-half inch in size.
- Granite pegmatite, with white to pink to red feldspar, sparse biotite and/or chlorite; massive. Massive pegmatite (1), with abundant white to pink feldspar, quartz; massive.
- Leucocratic granite, with pink to red subhedral feldspar, equiaxed; massive, locally foliated, including minor microgranite and pegmatite.

*Notes: Rock units are not arranged chronologically.

- Geological boundary (defined, approximate)
- Schistosity, ptyrochloite, foliation (defined, dip known, dip vertical, assumed)
- Extreme contortion (structural trend)
- Tight folds (structural trend)
- Fault (defined, inclined, approximate, assumed)
- Shear zone
- Breccia
- Hydraulic
- Joint
- Sample location
- Glacial stria (direction of ice movement known)
- Radioactivity
- Garnet
- Monazite
- Chlorite, abundant

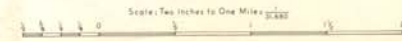
Geology by John D. Coffey and E. W. Polart, 1953, 1959
 Drainage (permanent, intermittent)
 Mudflat
 Sand-covered area
 Provincial boundary
 Township boundary
 Section line
 Base map compiled from planimetric sheet 74 SE, quarter, published by Government of Alberta, Department of Lands and Forests, Edmonton.

Air photographs covering this area are obtainable from the Technical Division, Department of Lands and Forests, Government of Alberta, Edmonton, and the National Air Photographic Library, Topographical Survey, Ottawa.
 Approximate magnetic declination 25° 55' East in 1962, decreasing 6' annually.



Map to accompany Preliminary Report 62-2

MAP 62-2A *Sheet #4*
COLIN LAKE
 WEST OF FOURTH MERIDIAN



Lithographed in Canada Published 1962