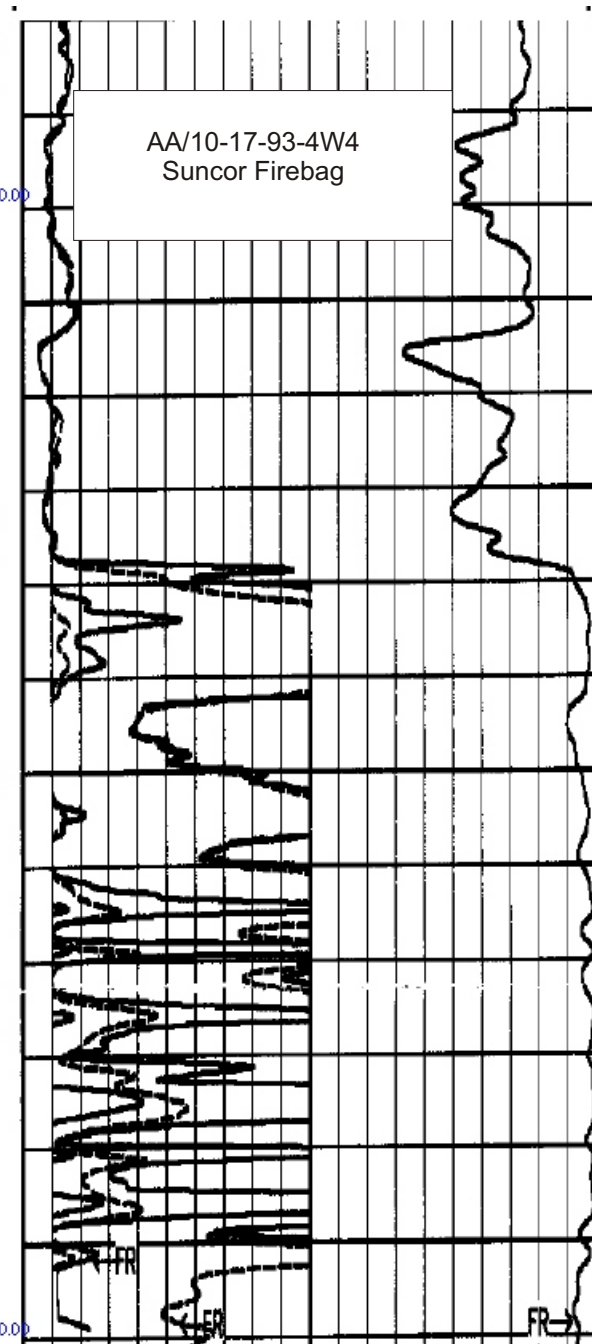
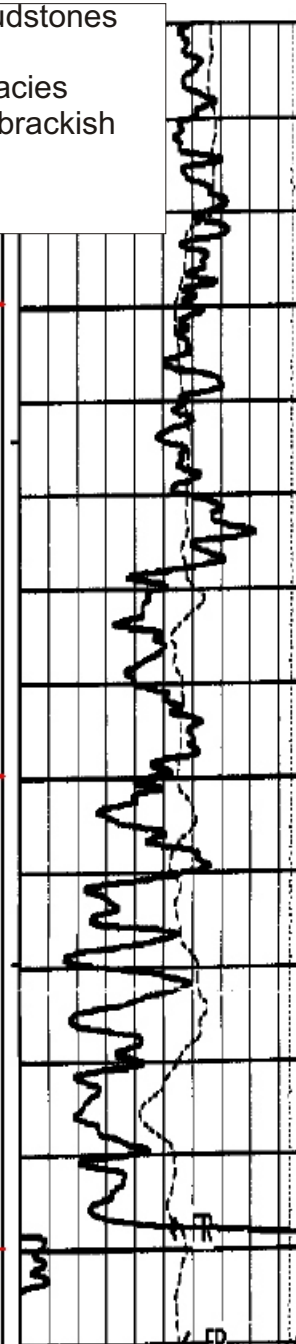
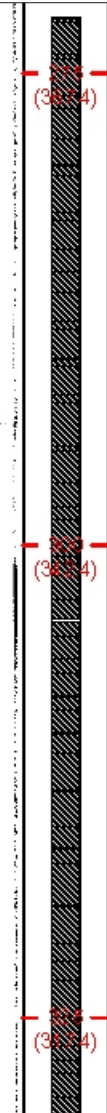


No regional McMurray mudstones
McMurray shoreface
-no associated lagoonal facies
Synaeresis cracks within brackish
bay deposits

- Wabiskaw C
- Wabiskaw D Flooding S.
- McMurray shoreface
- Brackish Bay
- Mixed Flat
- Abandoned Channel
- Point Bar
- Abandoned Channel
- Channel sand
- Burrowed Mud Flat



AA/10-17-93-4W4
Suncor Firebag