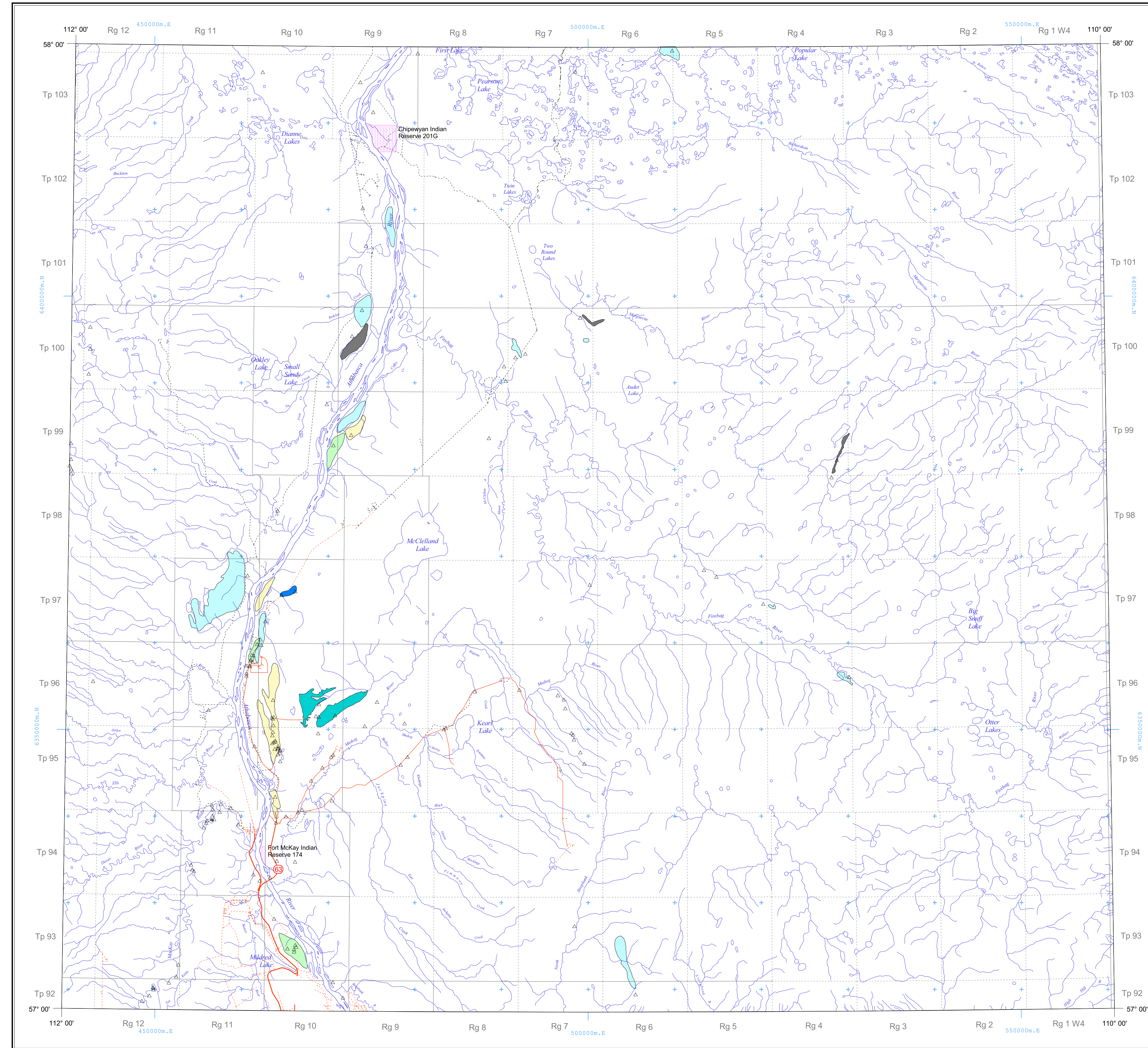


NTS 74E  
AGGREGATE



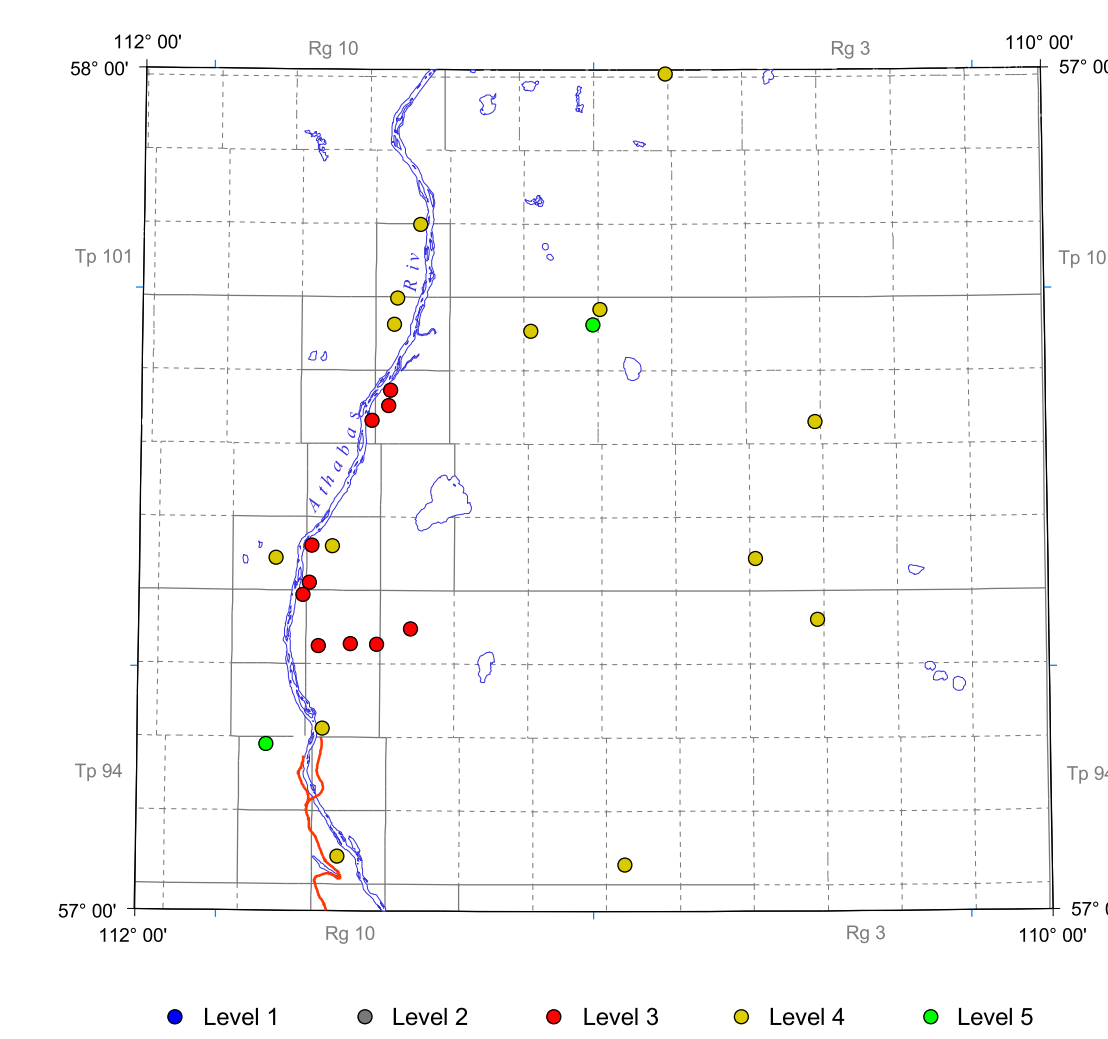
FEATURES LEGEND

- Site investigated △
  - Drill hole ○
- | Deposit Type         | GRAVEL | sandy GRAVEL | gravelly SAND | SAND |
|----------------------|--------|--------------|---------------|------|
| clean                |        |              |               |      |
| dirty/<br>very dirty |        |              |               |      |
| unknown              |        |              |               |      |
- UNKNOWN deposit type ■
- Deposit Type Definitions:**  
 GRAVEL deposit: contains greater than 75% gravel.  
 sandy GRAVEL deposit: contains 50% to 75% gravel.  
 gravelly SAND deposit: contains 25% to 50% gravel.  
 SAND deposit: contains less than 25% gravel.  
 UNKNOWN deposit: amount of gravel unknown.
- clean deposit: contains less than 3% silt and clay.  
 dirty deposit: contains 3% to 10% silt and clay.  
 very dirty deposit: contains greater than 10% silt and clay.  
 unknown: contains unknown percentage of mixed silt and clay.

BASEMAP LEGEND

- River and lake —
  - River - intermittent —
  - Road - paved —
  - Road - gravel —
  - Road - unimproved —
  - Railway line —
  - Trail —
  - Park boundary - provincial/national —
  - City/town ■
  - Metis settlement ■
  - Indian reserve —
  - Township/range - surveyed —
  - Township/range - unsurveyed —
  - UTM, zone 12 grid +
- This is a common map legend. Not all units may be present on this map.

Study Level



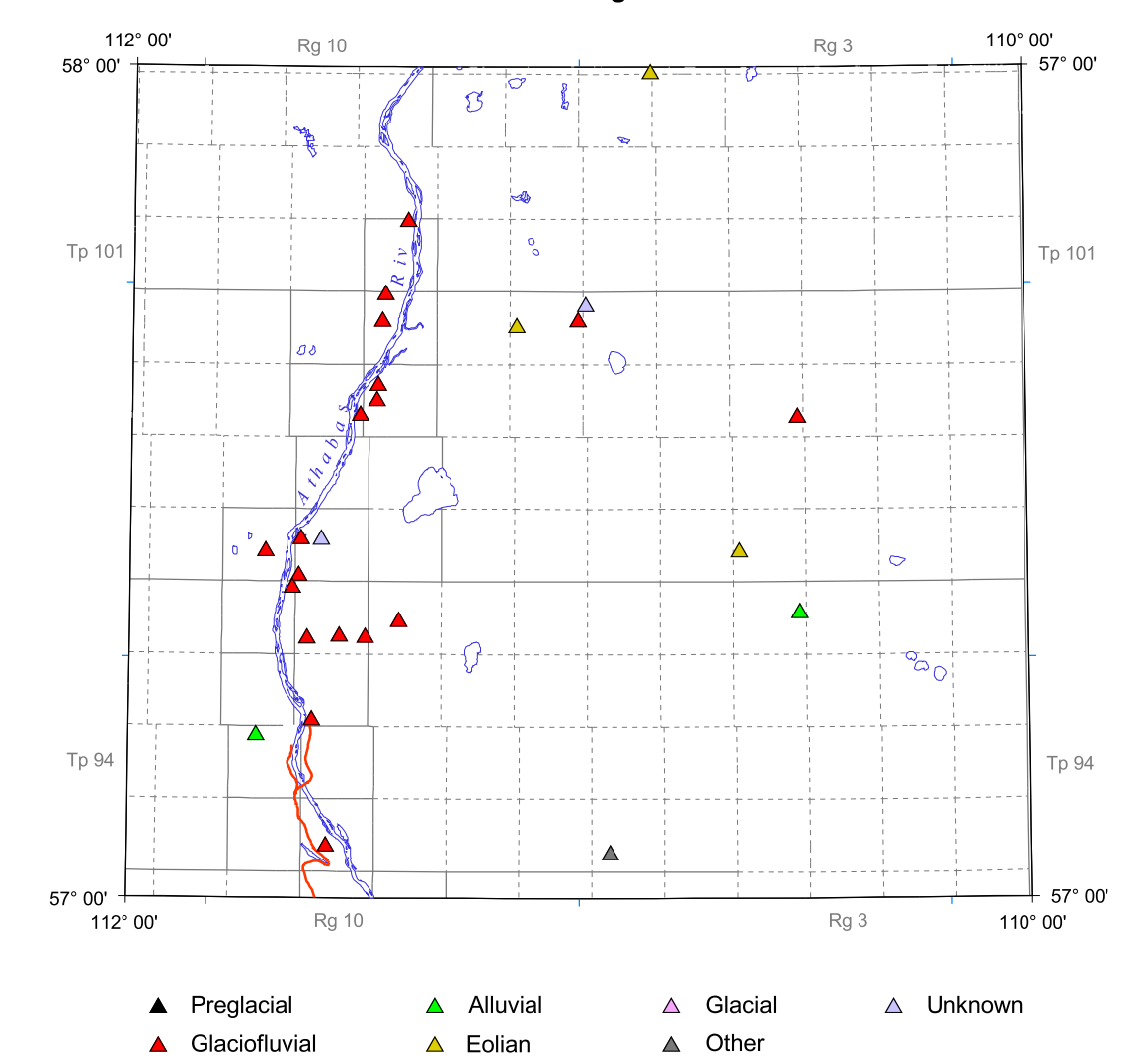
Study Level Definitions:

- Level 1 Aggregate reserves confirmed by grid testing and sampling.
- Level 2 Aggregate resources confirmed by multiple test holes and sampling.
- Level 3 Sand and/or gravel confirmed by Alberta Geological Survey site investigation and limited sampling and testing.
- Level 4 Sand and/or gravel areas assumed by Alberta Geological Survey investigation of associated sites, remote sensing and other sources of information.
- Level 5 Potential sand and/or gravel areas identified from remote sensing and other sources of information without Alberta Geological Survey site investigation.

References:

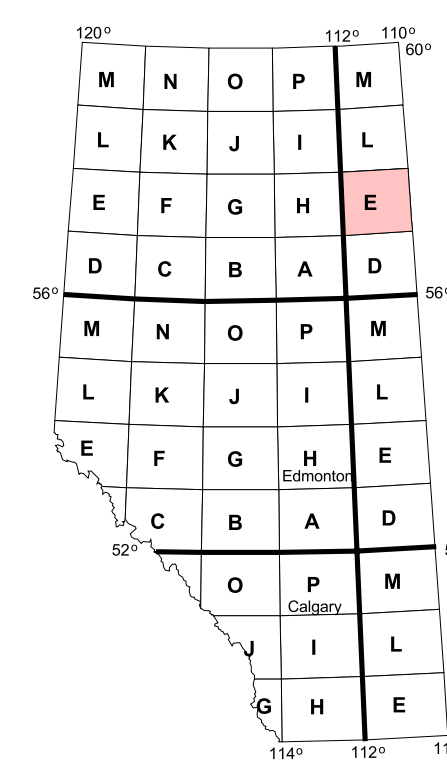
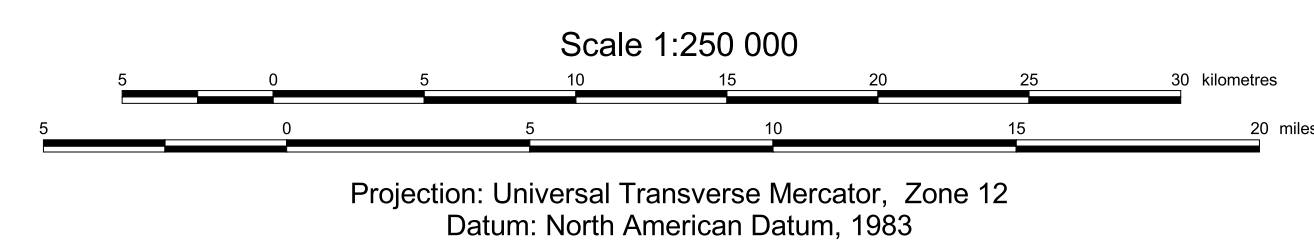
- Fox, J.C. (1980): Sand and gravel resources of the Athabasca Oil Sands region northeastern Alberta; Alberta Research Council, OFR 1980-07, 32 p.
- Mollard, J.D. and Mollard, D.G. (1974): Office airphoto study of sand and gravel prospects, vicinity of Fort McMurray, Alberta; report prepared by J.D. Mollard and Associates Limited for Alberta Department of Lands and Forests, 14 p.
- Peterson, B.N. and Lindberg, D.A. (1981): Evaluation of five granular deposits, McClelland Lake area; report prepared by Thurber Consultants Ltd. for Alberta Energy and Natural Resources, 6 volumes.
- Scafe, D.W. and Edwards, W.A.D. (2000): Sand and gravel resources of the Bitumount map area (NTS 74E); Alberta Energy and Utilities Board, Alberta Geological Survey, Map A74E, scale 1:250 000.

Genesis or Geological Feature



Published 2003  
 Copies of this map may be obtained from:  
 Information Sales  
 Alberta Geological Survey  
 Telephone: (780) 422-3767  
 Web site: www.ags.gov.ab.ca

Map 270  
**Sand and Gravel Deposits with Aggregate Potential  
 Bitumount, Alberta (NTS 74E)**  
 Geology compiled by: W.A.D. Edwards, H.D. Budney, T. Berezniuk  
 and L. Butkovic



Acknowledgement:

GIS/Database Cartography by:  
 M.C. Price, D.K. Chao, L. Butkovic  
 and N.L. Blundon  
 Digital base map provided by:  
 Spatial Data Warehouse

Disclaimer:

The Alberta Geological Survey and its employees and contractors make no warranty, guarantee or representation, express or implied, or assume any legal liability regarding the correctness, accuracy, completeness, or reliability of this publication. When using information from this publication in other publications or presentations, due acknowledgement should be given to the Alberta Energy and Utilities Board/Alberta Geological Survey.

